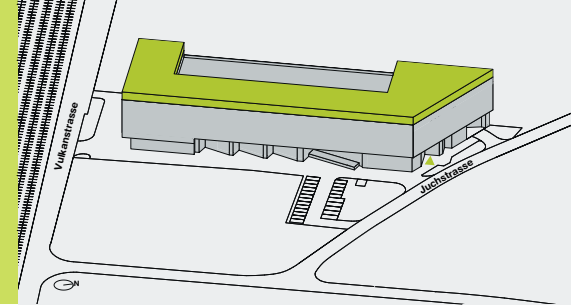


WESTLOG

YOUR NEW OFFICE IN THE WEST.

JUCHSTRASSE 9
8048 ZÜRICH

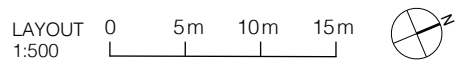
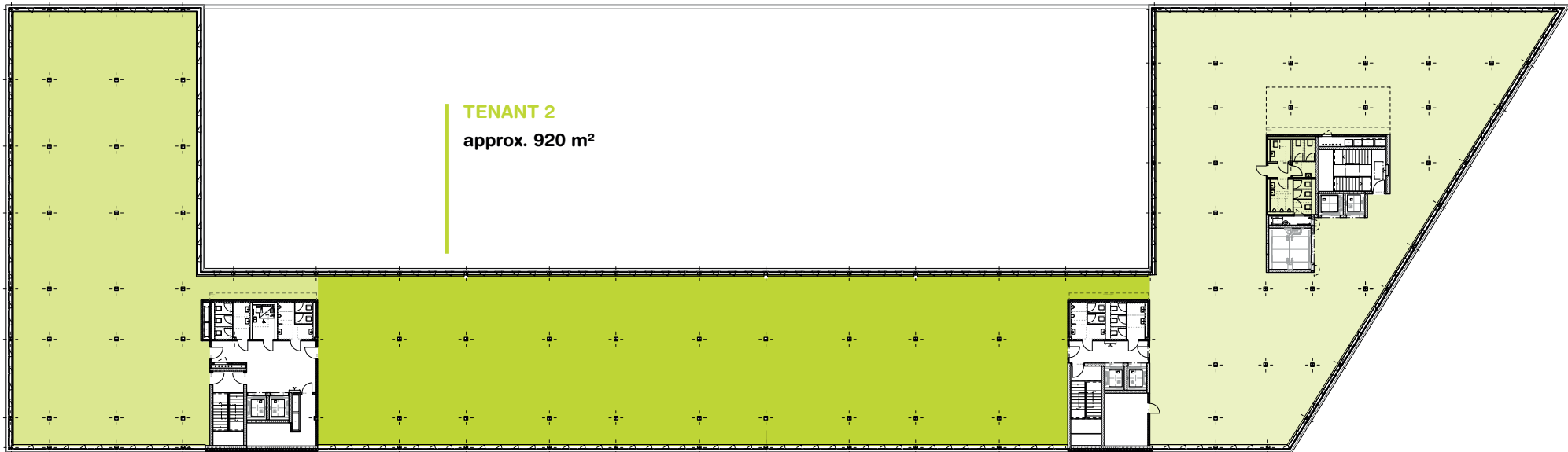
4th floor
Office area, variant 3 tenant



TENANT 1
approx. 602 m²

TENANT 3
approx. 770 m²

TENANT 2
approx. 920 m²



All measurements are approximate and are non-binding.

KM·P

The Art of Real Estate

An alliance member of
BNP PARIBAS
REAL ESTATE